



Wood Burning

Stoves & Inserts





Only Napoleon...

As in years passed, fireplaces prevail as cozy centerpieces around which families gather. Those magical flames warm our hearts and slowly melt into whimsical dreams of adventures and memories yet to come. Time after time, Napoleon® has led the way with new and innovative patented technology that continuously surpasses industry standards not only in appearance but in efficiency, performance and quality. Napoleon® is proudly registered under the world recognized ISO 9001-2000 Quality Certification.

With over 30 years in the hearth industry, we are able to offer you a wide range of products, all proudly carrying the President's Limited Lifetime Warranty. All of this experience, care and quality results in the creation of hearth products that possess a timeless and enduring style, worthy of a place in your home.

As the largest, family owned hearth products and gas grill manufacturer in North America, we welcome you to experience the complete family line-up of Napoleon® wood, gas, electric and oil burning fireplaces, inserts and stoves. Our products are available for viewing at a dealer nearest you or at napoleonfireplaces.com.

Why Napoleon® Wood Burning?

The answer is quite simple. No other hearth manufacturer in North America has perfected wood burning technology to the level that Napoleon® has... perfecting true craftsmanship to last a lifetime. Years of research, strict quality testing and patented wood burning technology have surpassed critical standards, providing you with the cleanest, most efficient wood burning products. Napoleon® products are backed by the President's Limited Lifetime Warranty, guaranteed to give you the solid performance you deserve.

Best Burn Times In The Industry

Napoleon® Wood Burning products offer state-of-the-art technology, unlike any others, completely utilizing the firebox chamber with a fully lined refractory system. The kiln-like atmosphere allows for an amazing long day or overnight burn. The single lever combustion control allows for simple regulation of the burn rate.

No Power... No Problem!

We all feel vulnerable when there is a power outage, but with a Napoleon® wood fireplace, stove or insert, you can rely on comfort and heat when you need it most. Napoleon® wood burning products double as a reliable cooking source, transferring heat directly to your pot or frying pan. Rest assured, you can stay safe, warm and cozy while enjoying a nice hot meal when the power is out!

Warming Homes, Not The Environment

Napoleon® products are designed not only for outstanding heating efficiencies but Napoleon® also takes great pride in their commitment to provide environmentally friendly wood burning products. Napoleon's patented wood burning technology exceeds EPA (Environmental Protection Agency) standards and has the cleanest burn and lowest emissions, substantially making a difference in keeping our environment clean.



Wolf Steel Manufacturing



Napoleon Appliance Corp.



Wolf Steel Montreal



Wolf Steel USA

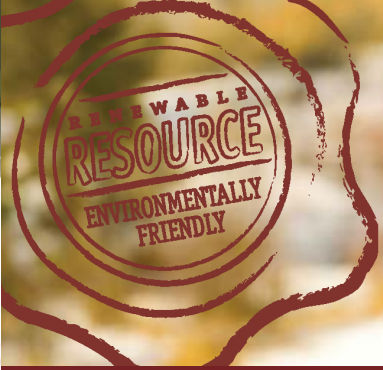


Proudly Made in North America



Wolf Steel Corporate Offices






Features

1600C-1 Cast Iron Stove - Heating 1200 sq. ft.

Fine, solid European cast iron design and Napoleon's advanced wood burning technology transform small amounts of wood into large amounts of cozy heat, easily sustaining overnight burns. The EPA certified 1600C-1 is available in porcelain enamel Majolica brown or traditional painted black and features an elegantly arched, Early American double door with concealed hinges. A beautiful investment for any room!

Napoleon® Exclusive Features

-  • Beautiful European cast iron design with curved arched double doors
 -  • Double doors open fully, almost flush to the sides (to 260°) for easy loading
 -  • Double walled construction combines a rugged cast iron interior firebox with a heat transferring outer cast iron jacket
 -  • Backed by President's Limited Lifetime Warranty
- Versatile installation, easily convertible, top or rear 6" venting
 - Concealed ash pan for convenient maintenance
 - Optional safety fire screen allows you to enjoy an "open fire" atmosphere
 - Optional blower for added heat circulation
 - Optional rear heat shield for reduced clearances
 - Removable handles maintain the clean stylish appearance
 - Optional outside air kit
 - Available in porcelain enamel Majolica brown and traditional painted black
 - Mobile home approved



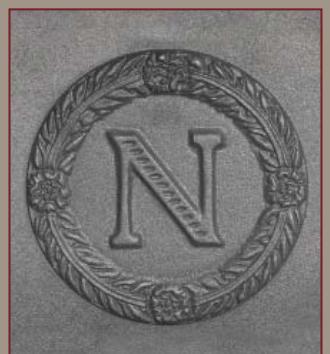
Hearth mount applications



Convenient hidden ash drawer



Optional elegant bay screen for a true wood burning feel



Beautiful insignia ensures Napoleon® quality is cast into every stove

Model	BTU Heat Output*	BTU Heat Output (High Burn)**	Firebox Capacity (cu ft)	Area Heated (sq ft)	Burn Time (hours)	Log Size (Max)	Emissions (grams per hour)	Flue Diameter		Catalytic Combustor	Mobile Home Approved	Blower Kit Available
								Top	Rear			
1600C-1	9,200 - 33,400	55,000	1.46	500 - 1500+	7 hrs	20"	6.75	6"	6"	No	Yes	Yes

1600C Clearances			
Installation	Corner	Rear	Sides
Single wall chimney connector from stove to combustibles	15" (11")	22" (10")	16" (16")
With approved double wall pipe from stove to combustibles	15" (11")	14" (10")	16" (16")

() With rear shield

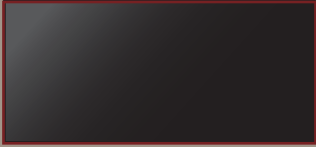
Figures may vary with individual conditions such as floor plan layout, insulation value/heat loss of the house, geographical location and firewood used.

* EPA (Environmental Protection Agency) rated BTU/h with softwood test fuel (for emissions only) - no refueling

** Wolf Steel Ltd. own test results showing realistic BTU using hardwood logs with regular refueling. Heat output will differ on chimney draft as well as type, moisture content and size of wood.



Finish Options



Traditional Painted Black



Majolica Brown



Wrought Iron



Shown in Majolica Brown

1100C-1 Cast Iron Stove - Heating 2000 sq. ft.
 The 1100C-1 is available in porcelain enamel Majolica brown, wrought iron or traditional painted black and features an elegantly arched, Early American look, single door with concealed hinges, ceramic glass and a convenient ash pan.

Model	BTU Heat Output*	BTU Heat Output (High Burn)**	Firebox Capacity (cu ft)	Area Heated (sq ft)	Burn Time (hours)	Log Size (Max)	Emissions (grams per hour)	Flue Diameter		Catalytic Combustor	Mobile Home Approved	Blower Kit Available
								Top	Rear			
1100C-1	11,700 - 32,700	55,000	1.7	600 - 1600+	7 hrs	18"	4.1	6"	N/A	No	No	Yes

1100C-1 Clearances			
Installation	Corner	Rear	Sides
Single wall chimney connector from stove to combustibles	6"	10"	12"
With approved double wall pipe from stove to combustibles	2"	6"	10"



Figures may vary with individual conditions such as floor plan layout, insulation value/heat loss of the house, geographical location and firewood used.
 * EPA (Environmental Protection Agency) rated BTU/h with softwood test fuel (for emissions only) - no refueling
 ** Wolf Steel Ltd. own test results showing realistic BTU using hardwood logs with regular refueling. Heat output will differ on chimney draft as well as type, moisture content and size of wood.



Napoleon's EPA Technology - Outperforms Your Expectations



Dual Vortex™ Action

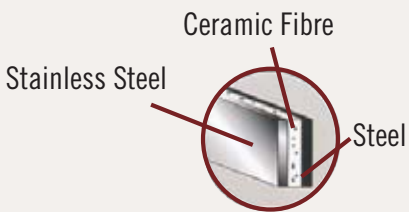
To achieve an extraordinary clean burn without a catalytic combustor, horizontal jets of super heated secondary air are mixed with the fire's smoke to burn off released smoke particles. You can actually watch the spirals of secondary flames just below the ceiling during most of the burn.



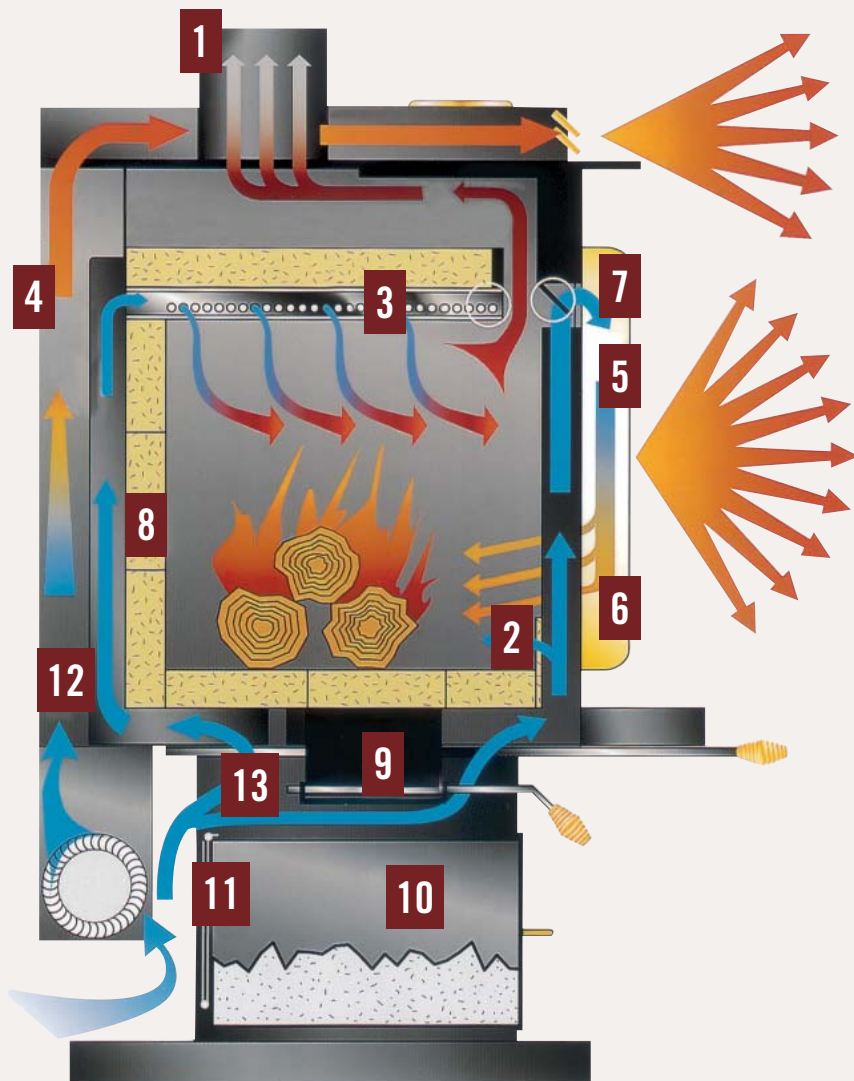
Secondary Air Tube - Kiln Construction

Napoleon's secondary air tube is insulated with ceramic fibre and protected with a stainless steel cover plate, ensuring complete combustion. This fully lined refractory firebox acts as a kiln, concentrating the maximum amount of heat to efficiently heat your home.

Napoleon's patented EPA Wood Burning Technology... more heat with less fuel. Emissions as low as 2.8 grams per hour and 69.8% overall maximum heating efficiency.



A combination of stainless steel and 2300°F resistant ceramic fibre protect against deterioration caused by extreme temperatures



- 1** Economical 6" flue on even the largest models, assures you of efficiency and cost saving installations.
- 2** Primary "bottom air feed" assists in cold start ups and to revive a small, dying fire.
- 3** Secondary air tube insulated with ceramic fibre and protected with a stainless steel cover plate ensures complete combustion.
- 4** Wrap around side shields add a delicate balance of elegance and functional practicality helping to disperse heat evenly and reduce clearances to combustibles.
- 5** Large viewing area through an elegantly arched cast iron door.
- 6** High heat ceramic glass provides a safe, unobstructed view of the fire.
- 7** Effective air wash in combination with high temperatures keeps the viewing glass clean.
- 8** Fully refractory lined firebox, similar to a kiln maintains the interior temperatures necessary to achieve low emissions.
- 9** Ash dump with self-closing door is readily accessible (pedestal & cast iron model).
- 10** Large "king size" functional ash pan (600 cu. inch capacity) with 2 carrying handles lets you conveniently dispose of ashes (pedestal model).
- 11** Folding ash pan lid allows for clean, no-mess ash removal (pedestal model).
- 12** Cool room air is circulated around the firebox, heated and returned to the room.
- 13** The single lever burn control regulates primary and secondary air establishing a perfect mix and a clean burn.

RENEWABLE
RESOURCE
ENVIRONMENTALLY
FRIENDLY

Features



Convenient ash pan



Wood storage compartment



Reliable cook top surface



Pot fenders keep food safely on the surface



1150P EPA Wood Gourmet™ Cookstove Heating 2000 sq. ft.

This unique, functional, EPA certified wood stove produces lots of warm, comfortable heat with the added benefit of a reliable cook top surface. With up to 55,000 BTU's, high burn output, large firebox capacity and the reliability of having a combined heating and cooking source without the need for electricity, this stove provides a valuable addition to your home, cottage or both!

Napoleon® Exclusive Features

- Fully lined refractory firebox for long burn times and even, consistent heat
- Convenient wood storage compartment
- Backed by President's Limited Lifetime Warranty
- Cast iron cook top surface
- Removable hot plates with designated "hot zones"
- Flush top design ensures "EASY SLIDE™" pan movement without lifting pots or pans
- Functional "pot fenders" keep cookware safely on surface
- Easy access ash pan (with oversized brushed stainless handle)
- Secondary burn tube ensures complete combustion
- Air wash system keeps glass clean
- Air control lever
- Optional painted black webbed arched or arched door available

Model	BTU Heat Output*	BTU Heat Output (High Burn)**	Firebox Capacity (cu ft)	Area Heated (sq ft)	Burn Time (hours)	Log Size (Max)	Emissions (grams per hour)	Flue Diameter		Catalytic Combustor	Mobile Home Approved	Blower Kit Available
								Top	Rear			
1150P	11,700 - 32,700	55,000	1.7	600 - 1600+	7 hrs	18"	4.1	6"	N/A	No	No	Yes

Proudly Made in North America

1150P Clearances		
Corner	Rear	Sides
6"	10"	12"

If the stove is to be installed on a combustible floor, it must be placed on an approved non-combustible hearth pad, that extends 8" (200mm) beyond the stove sides and back, and 18" (455mm) to the front.

Clearances can be reduced with shielding acceptable to local authorities. Reduced installation must comply with NFPA211 or CAN/CSA-B365

Figures may vary with individual conditions such as floor plan layout, insulation value/heat loss of the house, geographical location and firewood used.
 * EPA (Environmental Protection Agency) rated BTU/h with softwood test fuel (for emissions only) - no refueling
 ** Wolf Steel Ltd. own test results showing realistic BTU using hardwood logs with regular refueling. Heat output will differ on chimney draft as well as type, moisture content and size of wood.





Features



1450 EPA Independence™ Wood Stove Heating 2000 sq. ft.

Napoleon® is proud to offer the world renown quality of their clean burning wood technology at an economical price that's easy on your budget. The 1450 EPA wood stove provides the best value for your money - the same clean burning and efficient Napoleon® EPA technology, reliability and performance but in a "dressed down" version. Take control of your independence from the utilities companies and save money heating your home!



Convenient Single Lever Burn Control



Optional Heat Circulating Blower

Napoleon® Exclusive Features

- **Non-catalytic high tech design eliminates the need for a delicate ceramic catalytic combustor which can deteriorate over time**
- **Secondary air tube protected with a stainless steel cover plate ensures complete combustion**
- **Backed by President's Limited Lifetime Warranty**
- Appealing pedestal base provides a well concealed inlet for combustion air which can be drawn from outside to add even more heating efficiency
- The easy operation of a single lever burn control regulates primary and secondary air establishing a perfect mixture and providing a clean and efficient burn
- Wrap around side shields add a delicate balance of elegance and functional practicality helping to disperse heat evenly and reduce clearances to combustibles
- Large viewing area through an elegantly arched cast iron door
- Air wash in combination with high temperatures keeps the viewing glass clean
- Economical 6" flue assures you of efficiency and cost saving installations
- Upper firebox lined with ceramic fiber baffles
- Cool room air is circulated around the firebox, heated and returned to the room
- Optional heat circulating blower increases hot air distribution throughout the room
- Available in painted black

Model	BTU Heat Output*	BTU Heat Output (High Burn)**	Firebox Capacity (cu ft)	Area Heated (sq ft)	Burn Time (hours)	Log Size (Max)	Emissions (grams per hour)	Flue Diameter		Catalytic Combustor	Mobile Home Approved	Blower Kit Available
								Top	Rear			
1450	11,500 - 33,600	70,000	2.25	800 - 2000+	9 hrs	18"	3.5	6"	N/A	No	Yes†	Yes

1450 Clearances			
Installation	Corner	Rear	Sides
Single wall chimney connector from stove to combustibles	6"	12"	12"
With approved double wall pipe from stove to combustibles	4"	6"	10"

Proudly Made in North America

† US Only
 Figures may vary with individual conditions such as floor plan layout, insulation value/heat loss of the house, geographical location and firewood used.
 * EPA (Environmental Protection Agency) rated BTU/h with softwood test fuel (for emissions only) - no refueling
 ** Wolf Steel Ltd. own test results showing realistic BTU using hardwood logs with regular refueling. Heat output will differ on chimney draft as well as type, moisture content and size of wood.



NAPOLEON

Options



Black Webbed Arched Door

Black Arched Door



24 Karat Gold Plated Webbed Arched Door

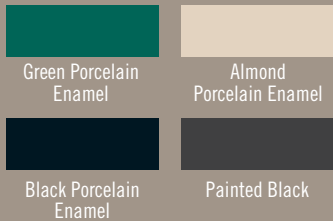
24 Karat Gold Plated Arched Door



Satin Chrome Webbed Arched Door

Satin Chrome Arched Door

Available Finishes



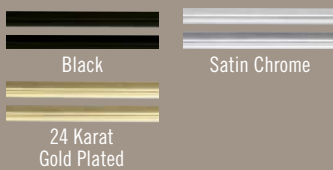
Green Porcelain Enamel

Almond Porcelain Enamel

Black Porcelain Enamel

Painted Black

Louvre Options



Black

Satin Chrome

24 Karat Gold Plated

Trivets



Satin Chrome

24 Karat Gold



Shown in green porcelain enamel with 24 karat gold plated arched door and louvres



Shown with black, webbed arched door, painted black finish and black louvres

1100 Pedestal - Heating 2000 sq. ft.

Napoleon's pedestal model wood burning stove features a solid, dynamic appearance with performance to match. The 1100 pedestal model is designed to provide you with outstanding heat efficiencies while achieving low emissions. Comes standard with black louvres, black trivet & ash pan with lid.

Model	BTU Heat Output*	BTU Heat Output (High Burn)**	Firebox Capacity (cu ft)	Area Heated (sq ft)	Burn Time (hours)	Log Size (Max)	Emissions (grams per hour)	Flue Diameter		Catalytic Combustor	Mobile Home Approved	Blower Kit Available
								Top	Rear			
1100	11,700 - 32,700	55,000	1.7	600 - 1600+	7 hrs	18"	4.1	6"	N/A	No	Yes	Yes

1100 Clearances			
Installation	Corner	Rear	Sides
Single wall chimney connector from stove to combustibles	6"	10"	12"
With approved double wall pipe from stove to combustibles	2"	6"	10"



Figures may vary with individual conditions such as floor plan layout, insulation value/heat loss of the house, geographical location and firewood used.
 * EPA (Environmental Protection Agency) rated BTU/h with softwood test fuel (for emissions only) - no refueling
 ** Wolf Steel Ltd. own test results showing realistic BTU using hardwood logs with regular refueling. Heat output will differ on chimney draft as well as type, moisture content and size of wood.



Shown with black arched door, painted black finish and black louvres

1400 Pedestal - Heating 2000 sq. ft.

Same great options and wood burning technology as the 1100, with a larger firebox chamber and heating area capacity. Comes standard with black louvres, black trivet & ash pan with lid.

Model	BTU Heat Output*	BTU Heat Output (High Burn)**	Firebox Capacity (cu ft)	Area Heated (sq ft)	Burn Time (hours)	Log Size (Max)	Emissions (grams per hour)	Flue Diameter		Catalytic Combustor	Mobile Home Approved	Blower Kit Available
								Top	Rear			
1400	11,500 - 33,600	70,000	2.25	800 - 2000+	9 hrs	18"	3.5	6"	N/A	No	Yes*	Yes

1400 Clearances				
Installation	Corner	Rear	Sides	
Single wall chimney connector from stove to combustibles	6"	12"	12"	
With approved double wall pipe from stove to combustibles	4"	6"	10"	

Proudly Made in North America
*US only

Figures may vary with individual conditions such as floor plan layout, insulation value/heat loss of the house, geographical location and firewood used.
* EPA (Environmental Protection Agency) rated BTU/h with softwood test fuel (for emissions only) - no refueling
** Wolf Steel Ltd. own test results showing realistic BTU using hardwood logs with regular refueling. Heat output will differ on chimney draft as well as type, moisture content and size of wood.

Options



Black Webbed Arched Door

Black Arched Door



24 Karat Gold Plated Webbed Arched Door

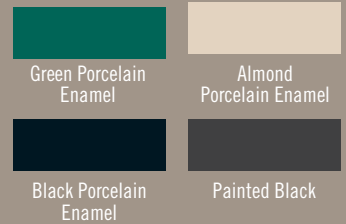
24 Karat Gold Plated Arched Door



Satin Chrome Webbed Arched Door

Satin Chrome Arched Door

Available Finishes



Green Porcelain Enamel

Almond Porcelain Enamel

Black Porcelain Enamel

Painted Black

Louvre Options



Black

Satin Chrome

24 Karat Gold Plated

Trivets



Satin Chrome Trivet

24 Karat Gold Plated Trivet

COOKMATE™ - Transfer heat directly to your frying pan or pot. The Cookmate™ simply replaces your existing trivet



Shown in almond porcelain enamel with 24 karat gold plated arch door and louvres

Options



Black Webbed Arched Door

Black Arched Door



24 Karat Gold Plated Webbed Arched Door

24 Karat Gold Plated Arched Door



Satin Chrome Webbed Arched Door

Satin Chrome Arched Door

Available Finishes



Green Porcelain Enamel

Almond Porcelain Enamel



Black Porcelain Enamel

Painted Black

Louvre Options



Black

Satin Chrome

24 Karat Gold Plated

Trivets



Satin Chrome Trivet

24 Karat Gold Plated Trivet

COOKMATE™ - Transfer heat directly to your frying pan or pot. The Cookmate™ simply replaces your existing trivet



Shown with black, arched door, painted black finish and black louvres



Shown with black, webbed arched door, painted black finish and black louvres

1900 Pedestal - Heating 3500 sq. ft.

Same great features as the 1100 & 1400 pedestal models. The largest firebox capacity in the line creates a tremendous amount of heat with incredibly low emissions. Comes standard with black louvres, black trivet & ash pan with lid. A wise investment for any home.

Model	BTU Heat Output*	BTU Heat Output (High Burn)**	Firebox Capacity (cu ft)	Area Heated (sq ft)	Burn Time (hours)	Log Size (Max)	Emissions (grams per hour)	Flue Diameter		Catalytic Combustor	Mobile Home Approved	Blower Kit Available
								Top	Rear			
1900	11,800 - 34,000	85,000	3.0	1000 - 3500+	12 hrs	20"	2.8	6"	N/A	No	No	Yes

Proudly Made in North America

1900 Clearances			
Installation	Corner	Rear	Sides
Single wall chimney connector from stove to combustibles	8"	12"	22"
With approved double wall pipe from stove to combustibles	8"	12"	22"

Figures may vary with individual conditions such as floor plan layout, insulation value/heat loss of the house, geographical location and firewood used.
 * EPA (Environmental Protection Agency) rated BTU/h with softwood test fuel (for emissions only) - no refueling
 ** Wolf Steel Ltd. own test results showing realistic BTU using hardwood logs with regular refueling. Heat output will differ on chimney draft as well as type, moisture content and size of wood.



Options



Black Webbed Arched Door

Black Arched Door



24 Karat Gold Plated Webbed Arched Door

24 Karat Gold Plated Arched Door



Satin Chrome Webbed Arched Door

Satin Chrome Arched Door

Louvre Options



Black

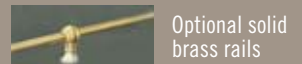
Satin Chrome

24 Karat Gold Plated

Leg Options



Legs available in traditional painted black steel or elegant cast iron in 24 karat gold plated, satin chrome or painted black



Optional solid brass rails



Optional Ash Pan - For leg models 1100PL & 1400PL. It allows you the choice to install a convenient ash drawer to dispose of excess ashes.

Shown with 24 karat gold plated, webbed arched door, louvres and decorative cast iron legs

1100PL Leg Model - Heating 2000 sq. ft.

This highly efficient leg model stove not only looks great, it provides lots of reliable heat which can be easily adjusted by the single lever burn control. Napoleon's air wash technology combined with high temperatures keep the viewing glass clean so you can always enjoy the beautiful wood burning flame.

Model	BTU Heat Output*	BTU Heat Output (High Burn)**	Firebox Capacity (cu ft)	Area Heated (sq ft)	Burn Time (hours)	Log Size (Max)	Emissions (grams per hour)	Flue Diameter		Catalytic Combustor	Mobile Home Approved	Blower Kit Available
								Top	Rear			
1100PL	11,700 - 32,700	55,000	1.7	600 - 1600+	7 hrs	18"	4.1	6"	N/A	No	Yes	Yes

1100PL Clearances

Installation	Corner	Rear	Sides
Single wall chimney connector from stove to combustibles	6"	10"	12"
With approved double wall pipe from stove to combustibles	2"	6"	10"

Proudly Made in North America

Figures may vary with individual conditions such as floor plan layout, insulation value/heat loss of the house, geographical location and firewood used.

* EPA (Environmental Protection Agency) rated BTU/h with softwood test fuel (for emissions only) - no refueling

** Wolf Steel Ltd. own test results showing realistic BTU using hardwood logs with regular refueling. Heat output will differ on chimney draft as well as type, moisture content and size of wood.

Options



Shown with satin chrome, webbed arched door, louvres and decorative cast iron legs



Black Webbed Arched Door



Black Arched Door



24 Karat Gold Plated Webbed Arched Door



24 Karat Gold Plated Arched Door



Satin Chrome Webbed Arched Door



Satin Chrome Arched Door

Louvre Options



Black

Satin Chrome

24 Karat Gold Plated

Leg Options



Legs available in traditional painted black steel or elegant cast iron in 24 karat gold plated, satin chrome or painted black



Optional solid brass rails



Optional Ash Pan - For leg models 1100PL & 1400PL. It allows you the choice to install a convenient ash drawer to dispose of excess ashes.

1400PL Leg Model - Heating 2000 sq. ft.

Same great features of the 1100PL but with more heating capacity for larger rooms. With all the decorative accessories available for the leg model stoves, you can customize your stove to complement your own personal style.

Model	BTU Heat Output*	BTU Heat Output (High Burn)**	Firebox Capacity (cu ft)	Area Heated (sq ft)	Burn Time (hours)	Log Size (Max)	Emissions (grams per hour)	Flue Diameter		Catalytic Combustor	Mobile Home Approved	Blower Kit Available
								Top	Rear			
1400PL	11,500 - 33,600	70,000	2.25	800 - 2000+	9 hrs	18"	3.5	6"	N/A	No	No	Yes

1400PL Clearances			
Installation	Corner	Rear	Sides
Single wall chimney connector from stove to combustibles	6"	12"	12"
With approved double wall pipe from stove to combustibles	4"	6"	10"

Proudly Made in North America

Figures may vary with individual conditions such as floor plan layout, insulation value/heat loss of the house, geographical location and firewood used.
 * EPA (Environmental Protection Agency) rated BTU/h with softwood test fuel (for emissions only) - no refueling
 ** Wolf Steel Ltd. own test results showing realistic BTU using hardwood logs with regular refueling. Heat output will differ on chimney draft as well as type, moisture content and size of wood.



Options



Black Webbed Arched Door



Black Arched Door



24 Karat Gold Plated Webbed Arched Door



24 Karat Gold Plated Arched Door



Satin Chrome Webbed Arched Door



Satin Chrome Arched Door

Cast Iron Surround Finishes



Painted Black

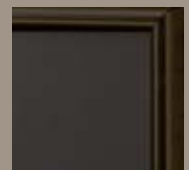


Porcelain Black



Majolica Brown

Flashing



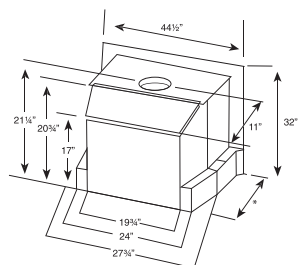
Standard flashing complete with black trim

Shown with satin chrome arched door and standard black flashing

1101 Insert - Heating 2000 sq. ft.

The 1101 Insert won a prestigious industry award for its unique design, which allows for flush mount or hearth mount installation in either masonry or factory built fireplaces. Featuring an elegantly designed, full view single door, standard "WHISPER QUIET" heat circulating blower & thermostatic sensor, this innovative design transforms small amounts of wood into large amounts of cozy heat. Customize your 1101 insert with an optional cast iron surround kit, available in a variety of porcelain enamel or painted finishes that will enhance your décor.

Model	BTU Heat Output*	BTU Heat Output (High Burn)**	Firebox Capacity (cu ft)	Area Heated (sq ft)	Burn Time (hours)	Log Size (Max)	Emissions (grams per hour)	Flue Diameter		Catalytic Combustor	Mobile Home Approved	Blower Kit Available
								Top	Rear			
1101	11,700 - 32,700	55,000	1.7	600 - 1600+	7 hrs	18"	4.1	6"	N/A	No	No	Standard



Min. Fireplace Opening: 28"W x 22"H x 16"D
Overall dimensions with cast iron surround 42 1/2"W x 28 1/8"H

* To allow for shallow fireplace openings - Insert adjusts up to 5", from 15 1/8" to 20 1/8" in depth. See page 20 for installation clearances.

Figures may vary with individual conditions such as floor plan layout, insulation value/heat loss of the house, geographical location and firewood used.

* EPA (Environmental Protection Agency) rated BTU/h with softwood test fuel (for emissions only) - no refueling

** Wolf Steel Ltd. own test results showing realistic BTU using hardwood logs with regular refueling. Heat output will differ on chimney draft as well as type, moisture content and size of wood.

Proudly Made in North America

Options



Black Webbed Arched Door

Black Arched Door



24 Karat Gold Plated Webbed Arched Door

24 Karat Gold Plated Arched Door



Satin Chrome Webbed Arched Door

Satin Chrome Arched Door

Available Inset Colours



Porcelain Green

Porcelain Almond



Porcelain Black

Painted Black

Cast Iron Surround Finishes



Painted Black

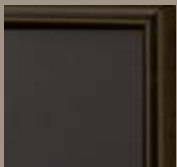


Porcelain Black



Majolica Brown

Flashing



Standard flashing complete with black trim



Porcelain Almond



Porcelain Green



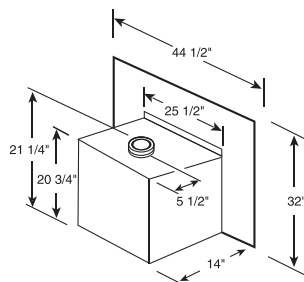
Porcelain Black

1402 Insert - Heating 2000 sq. ft.

What do you do with your existing inefficient masonry fireplace? Retrofit an efficient Napoleon® Woodburning Insert! Through easy operation, you achieve clean burning fires radiating luxurious heat with minimal amount of work and wood, saving you precious time and money! Designed to be the perfect fit, this stylish insert will bring you years of satisfaction and of course ... the beauty of a natural roaring fire with incomparable efficiencies! The deluxe 1402 insert comes standard with 2 powerful heat circulating 200 cfm blowers.

Model	BTU Heat Output*	BTU Heat Output (High Burn)**	Firebox Capacity (cu ft)	Area Heated (sq ft)	Burn Time (hours)	Log Size (Max)	Emissions (grams per hour)	Flue Diameter		Catalytic Combustor	Mobile Home Approved	Blower Kit Available
								Top	Rear			
1402	11,500 - 33,600	70,000	2.25	800 - 2000+	9 hrs	18"	3.5	6"	N/A	No	No	Standard

Proudly Made in North America



Min. Fireplace Opening: 26"W x 22"H x 14"D
Overall dimension with cast iron surround 54"W x 32"H

*See page 20 for installation clearances

Figures may vary with individual conditions such as floor plan layout, insulation value/heat loss of the house, geographical location and firewood used.

* EPA (Environmental Protection Agency) rated BTU/h with softwood test fuel (for emissions only) - no refueling

** Wolf Steel Ltd. own test results showing realistic BTU using hardwood logs with regular refueling.

Heat output will differ on chimney draft as well as type, moisture content and size of wood.



Accessories, Options & Advantages

Door Kit Options



Traditional Painted Black Webbed Arched



24 Karat Gold Plated Webbed Arched



Satin Chrome Webbed Arched



Traditional Painted Black Arched



24 Karat Gold Plated Arched



Satin Chrome Arched

Napoleon's satin chrome and gold plating process provides 100% complete coverage on all surfaces, ensuring a high quality, polished finish. Air control & door spring handles are shipped with matching door finish.

Louvre Options



Black



24 Karat Gold Plated



Satin Chrome

Trivet

Available for pedestal models only. Painted Black standard with pedestal models.



Satin Chrome Trivet



24 Karat Gold Plated Trivet

Cast Iron Surround (1101, 1402)

Painted Black



Napoleon's porcelain enamel cast iron surround kits are available for the 1101 and 1402 inserts. Create a distinct elegance with any of the two colours or painted black.



Majolica Brown



Porcelain Black



Traditional Painted Black

Ash Dump Pan Option



Optional for the leg models, 1100PL and 1400PL allows you to dispose of ashes quickly and easily. Standard on pedestal models

COOKMATE™

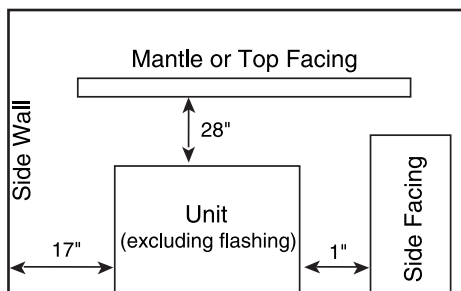


COOKMATE™ - The unique grid pattern moulded into the cast aluminum captures and retains the maximum amount of heat and transfers it directly to your frying pan or pot. The Cookmate™ simply replaces your existing trivet.

Outside Air Kit Option

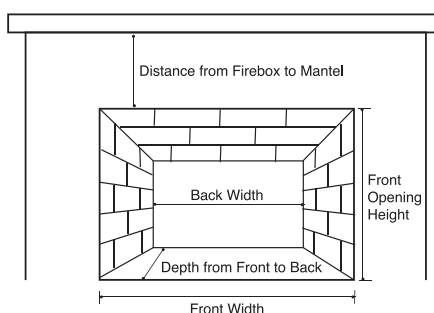
Wood burning appliances need air to burn and often compete with other appliances in the home. The outside air kit helps balance indoor air pressure by ensuring sufficient combustion air is fed directly to the wood stove.

Installation Clearances



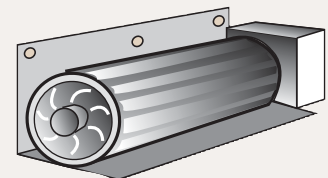
A combustible floor must be protected by a non-combustible material extending 18" to the front of the unit and 8" to the side.

Measuring For An Insert



Heat Circulating Blower

When you want to extract the maximum amount of heat, an optional heat circulating variable speed blower offers increased heating efficiency. An optional sensor control automatically turns the blower on and off. (With 1101 and 1402 inserts models, WHISPER QUIET™ heat circulating blowers with automatic thermdisc and variable speed control are standard with the units).





Explaining Nature's Carbon Cycle

Help Protect the Environment with a Napoleon® Wood Burning Fireplace, Stove or Insert

Carbon is an essential part of life on Earth. It plays an important role in the structure, biochemistry and nutrition of all living cells. Nature's cycle is an exchange of carbons between the atmosphere and vegetation, using the energy from the sun. Plants absorb the CO₂ from the atmosphere during photosynthesis, also called primary production, and release CO₂ back into the atmosphere during respiration.

How does this relate to wood burning? Trees (like any vegetation) absorb carbon dioxide from the air as they grow. When trees die from the natural aging process or are consumed in a forest fire, the carbon that is stored within the trees is again released into the air as carbon dioxide. This is the simplest form of nature's carbon cycle.

Heating your home with a Napoleon® high efficiency, EPA (Environmental Protection Agency) approved fireplace, stove or insert releases no more carbon dioxide than a dying tree would lying on the forest floor. In fact, when the entire carbon cycle is considered, a Napoleon® EPA Approved fireplace heats your home more efficiently and with less impact on the environment than any other heating fuel option.



When other fossil fuels such as coal, etc, are used to heat your home, run your car or power your appliances, old carbon that has been stored in the Earth's geosphere for millions of years is released into the atmosphere. This increasing compressed form of carbon dioxide is directly linked to global warming.

A Napoleon® EPA approved fireplace, stove or insert does not contribute to this effect as no more carbon dioxide is released than would a dying tree from a natural forest.

Napoleon®, Helping Protect The Environment.



Go Green
With Napoleon®





Stove & Insert Dimensions

Model	Width x Height x Depth	Firebox Chamber	Weight Of Bricks	Weight Without Bricks
1600C-1 	26 3/4" X 28" X 24 1/4"	20 1/2" x 10 1/2" x 12"	N/A	330 lbs
1100C-1 	25 1/2" x 28 1/2" x 22 1/2"	18" x 12" x 13 1/2"	110 lbs	252 lbs
1150P 	29 3/8" x 36 1/2" x 23 3/16"	18" x 12" x 13 1/2"	110 lbs	280 lbs
1450 	25 1/2" x 33 1/4" x 27"	18" x 12" x 18"	145 lbs	250 lbs
1100 Small 	25 1/2" x 33 1/4" x 22 1/2"	18" x 12" x 13 1/2"	110 lbs	215 lbs
1400 Medium 	25 1/2" x 33 1/4" x 27"	18" x 12" x 18"	145 lbs	250 lbs
1900 Large 	25 1/2 x 33 1/4" x 31 1/2"	18" x 12" x 22 1/2"	114 lbs	285 lbs
1100PL Small 	25 1/2" x 33 1/4" x 22 1/2"	18" x 12" x 13 1/2"	110 lbs	215 lbs
1400PL Medium 	25 1/2" x 33 1/4" x 27"	18" x 12" x 18"	145 lbs	250 lbs
1101 	25 1/2" x 21 1/4" x 27"	18" x 12" x 13 1/2"	110 lbs	185 lbs
1402 	25 1/2" x 21 1/4" x 27"	18" x 12" x 18"	145 lbs	250 lbs

Experience Napoleon's impressive product selection online



Please visit our website, napoleonfireplaces.com for more information on our complete line of wood, gas, oil and electric fireplaces, stoves and inserts as well as the Napoleon® Waterfall collection. Click "Where to Buy" to find the dealer nearest you.

We also have a complete line of outdoor living products including outdoor gas fireplaces, patio heaters, an outdoor gas firepit and gourmet gas grills.



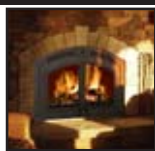
Other Napoleon® Products



Fireplace Inserts



Outdoor Living Products



Woodburning Fireplaces



Modern Collection



High Efficiency Gas Stoves



Direct Vent Fireplaces



Electric Fireplaces



Waterfall Collection



Gourmet Gas Grills

Napoleon stoves are certified for emissions to EPA phase 2 1990 and DEQ 1988 Standards and safety tested by Warnock Hersey to North American Standards. CSA B366.2, ULC S627, ULC S628 and UL 1482. Consult your owner's manual for complete installation instructions and check all local and national building codes. All specifications and designs are subject to change without notice to allow for on-going product improvement. Images may not be exactly as shown. Actual enamel colours might be slightly different as shown in brochure. Patent U.S. 5,307,801, 5,303,693, 75054, 417497 - Can. 2,073,411, 2,082,915, 74589 © Wolf Steel Ltd. Napoleon® is a registered trademark of Wolf Steel Ltd.



• 103 Miller Drive, Crittenden, Kentucky, USA 41030
 • 24 Napoleon Road, Barrie, Ontario, Canada L4M 4Y8
 • 7200 Trans Canada Highway, Montreal, Quebec, Canada H4T 1A3
 Tel: 705-721-1212 Fax: 705-722-6031
napoleonfireplaces.com
fireplacedesignstudio.com

